

Our TMH Resource Committee  
Trenton Memorial Hospital  
Facts and Figures



12 August 2015

# Overview

OurTMH Resource Committee projects:

- Provincial Organization of Health Care
- Veterans Care
- Health Care Tomorrow
- Priority Services
- Survey Results
- Health Care Statistics
- TMH Site Review



# HEALTH CARE GOVERNANCE

## **Ontario Ministry of Health and Long term Care**

- provides overall funding, strategy and oversight

## **Local Health Integration Network**

- provides regional level strategy and oversight

## **Board of Directors (of each Hospital)**

- provides organizational level strategy and oversight

# THE ONTARIO ACTION PLAN FOR HEALTH CARE FOCUSES ON FOUR KEY OBJECTIVES

---

## Access

Provide faster access to the right care

## Connect

Deliver better coordinated and integrated care  
in the community, closer to home

## Inform

Provide people the education, information and  
transparency needed to make decisions about their health

## Protect

Protect our universal public health care system  
to sustain the system for generations to come

*Dr Eric Hoskins, Ont Minister of Health , Feb 2015*

# Local Health Integration Networks

---

Established 2006

14 LHINs in Ontario

Allocate funds

Work with providers to plan, engage, and make decisions at the local level

Goal is to improve health care system

## Responsible for:

- Hospitals
- Long term care homes
- CCACs
- Community Support for Seniors
- CHCs
- Addictions and Mental Health

## Not responsible for:

- Physicians and Family Health Teams
- Public Health
- Ambulance services
- Provincial Networks (e.g. Cancer Care Ontario, Stroke Network)



# SOUTHEAST LHIN

Brighton to east of Prescott, north-east of Smith Falls,  
to north of Bancroft

Encompassing Quinte West, Belleville, Kingston,  
Prince Edward County

## \$1.1 Billion in annual funding for

Hospital corporations

Long-Term care homes

Community Care

Addiction and Mental Health Programs

Community Support Services

– 12 sites (60% of funds)

– 30 homes

– 4,050 beds in 37 facilities

– 5 Centres in 8 locations

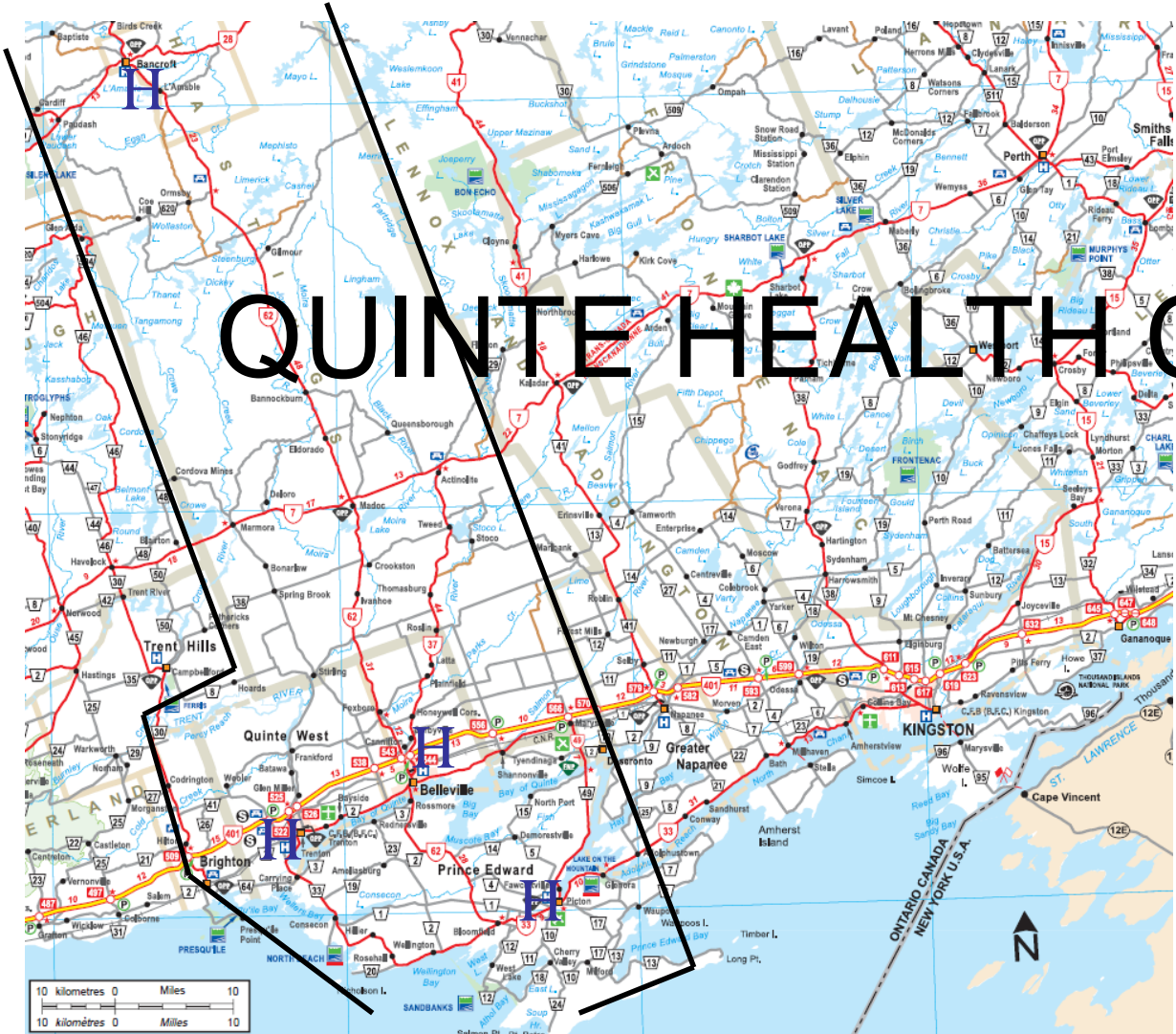
– 10 organizations

– 27 agencies

5 Hospice agencies

1 Community Care Access Centre

# QUINTE HEALTH CARE



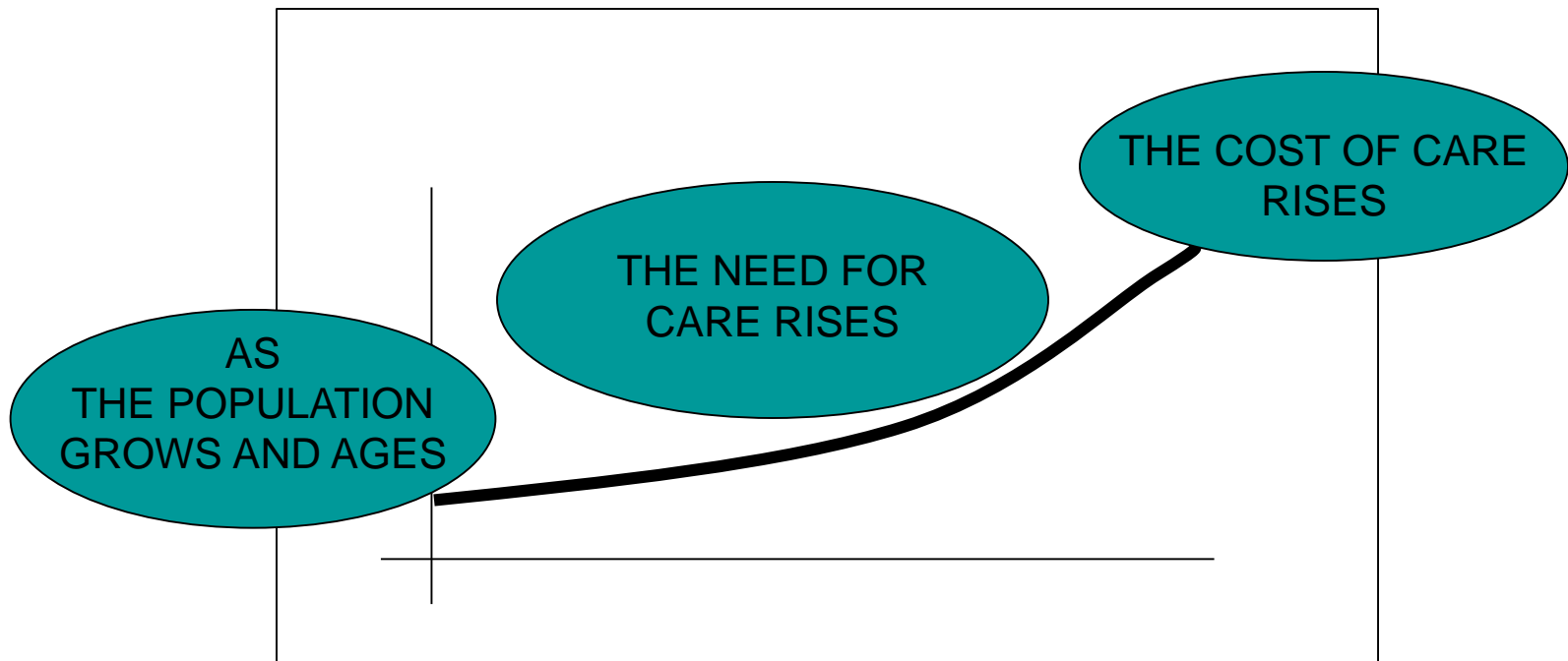
	Belleville	Quinte West	Brighton	Quinte Region	Greater Quinte Region
Total	49,454	43,086	10,928	103,468	220,121
Age 65+	9,505	7,290	2,720	19,515	43,830

# THE ISSUE

DEMOGRAPHICS

VS

HEALTH CARE





# THE RESPONSE ...

## Provincial Government Health Services Funding Reform

---

Hospital funding tied to *measurable activities*

- Health Service Accountability Agreement *enforces accountability* for
  - Spending
  - Number of patients receiving care
  - Quality of care delivered

# THE RESPONSE ...

## Brighton/Quinte West Health Services Advisory Committee

Symposium (Batawa 13 May 2015)

### *Understanding the Health Care System - Health Care Tomorrow*

- Health Care, a Team Sport – Glenn Rainbird
- Health Care Tomorrow – Paul Huras
- Demographics – Paul McAuley
- Primary Care – Panel
- Home Care and Support Services – Panel
- General Principles of Health Care Design - Syndicates

# Creating Your Health Care System – Building Blocks

## Desired State:

Sustainable services based on community needs

## Driven by:

- Ability to meet quality standards
- Population demographics/health status
- Available resources (funding and people)

**BRIGHTON  
QUINTE WEST  
HEALTH CARE  
SYMPOSIUM  
13 MAY 2015**

## LHIN-WIDE OR PROVINCIAL PROGRAM

Cardiac Surgery/Procedures  
Radiation  
Trauma and some ICU care  
Cancer Centre

Neurosurgery  
Transplants  
Genetic testing  
Specialized paediatric and  
obstetrical care

## REGIONAL SPECIALTY PROGRAM

Cardiac rehab  
Screening programs  
Chemotherapy  
MRI/CT  
ICU  
Other mental health services

Telemedicine  
Stroke Care  
Obstetrics (birthing)  
Trauma  
Language and speech  
pathology  
Public health  
Allergy specialist

Supportive housing (mental  
health, disabilities acquired  
brain injury)  
E-health and E-consults  
Joint replacement  
Paediatrics  
Ophthalmology

## LOCAL / PRIMARY CARE

Social programs  
Primary health provider  
Home care  
Assisted living  
Mental health counseling

Dialysis  
OT/Physio  
Imaging/X-Ray/Lab  
Substance Abuse  
Wound Care

ER services  
Long-term care homes  
End-of-life/palliative care  
Accessible housing  
Methadone clinic

Urgent care  
Pre-natal care  
Transportation for access to  
regional services

## SELF – WELLNESS AND CARE

Exercise programs  
Nutrition programs for diabetes  
Meals on Wheels

Health promotion and disease  
prevention  
Disease management  
Vaccination

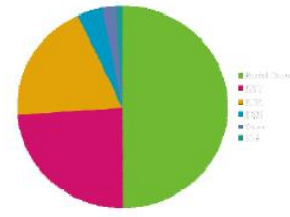
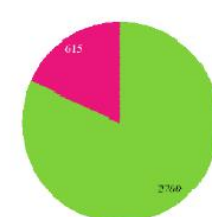
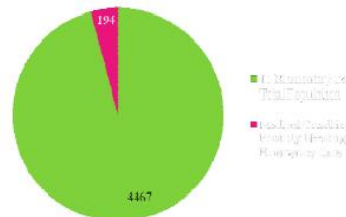
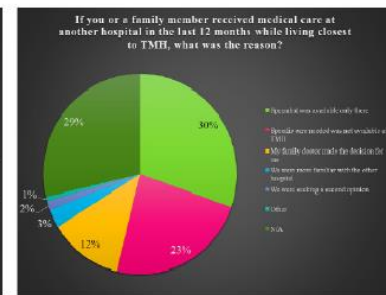
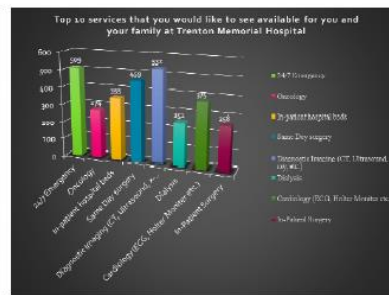
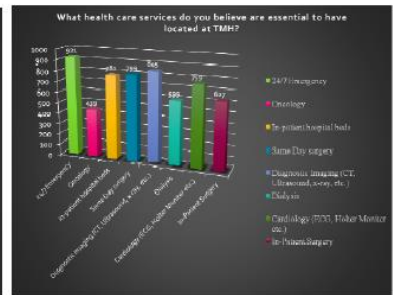
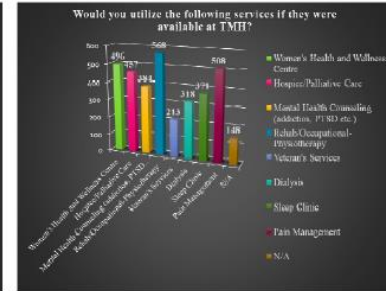
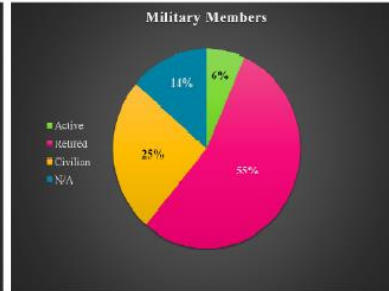
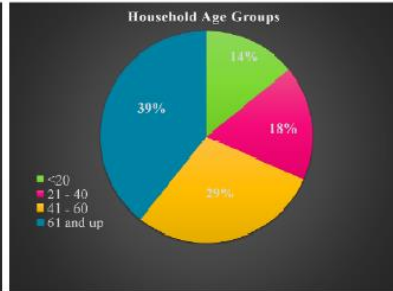
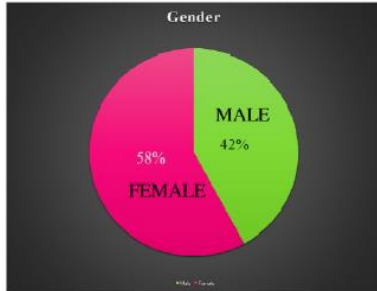
Social programs  
Electronic home care support  
Senior's day program

# The OurTMH Health Care Survey

---

- Created to poll the people of Quinte West on their needs and wants
- 1000 surveys answered
- Provided at the QW Home Show, at businesses, schools, events
- Established age, gender, background, location
- Questions on what health care is considered essential, desirable, used
- What services would be used if available
- What proportion of the school population needs emergency care

# SURVEY RESULTS



# HEALTHCARE / DISEASE STATS

## COPD

- Leading cause of hospitalization in QHC

## Cancer

- 30 % of all Deaths in Canada are from Cancer
- 75,000 Canadians per year die
- Aging Population increases incidents of and mortality rates for cancer

## Heart Disease / cardiovascular disease accounts for

- Death 29% Males 28% Females 29.7%
- Ischemic heart disease 54%
- Stroke 20%
- Heart Attacks 23%

## Stroke

- 3<sup>RD</sup> and 4<sup>TH</sup> leading causes of death

## Diabetes

## Dementia

## Kidney

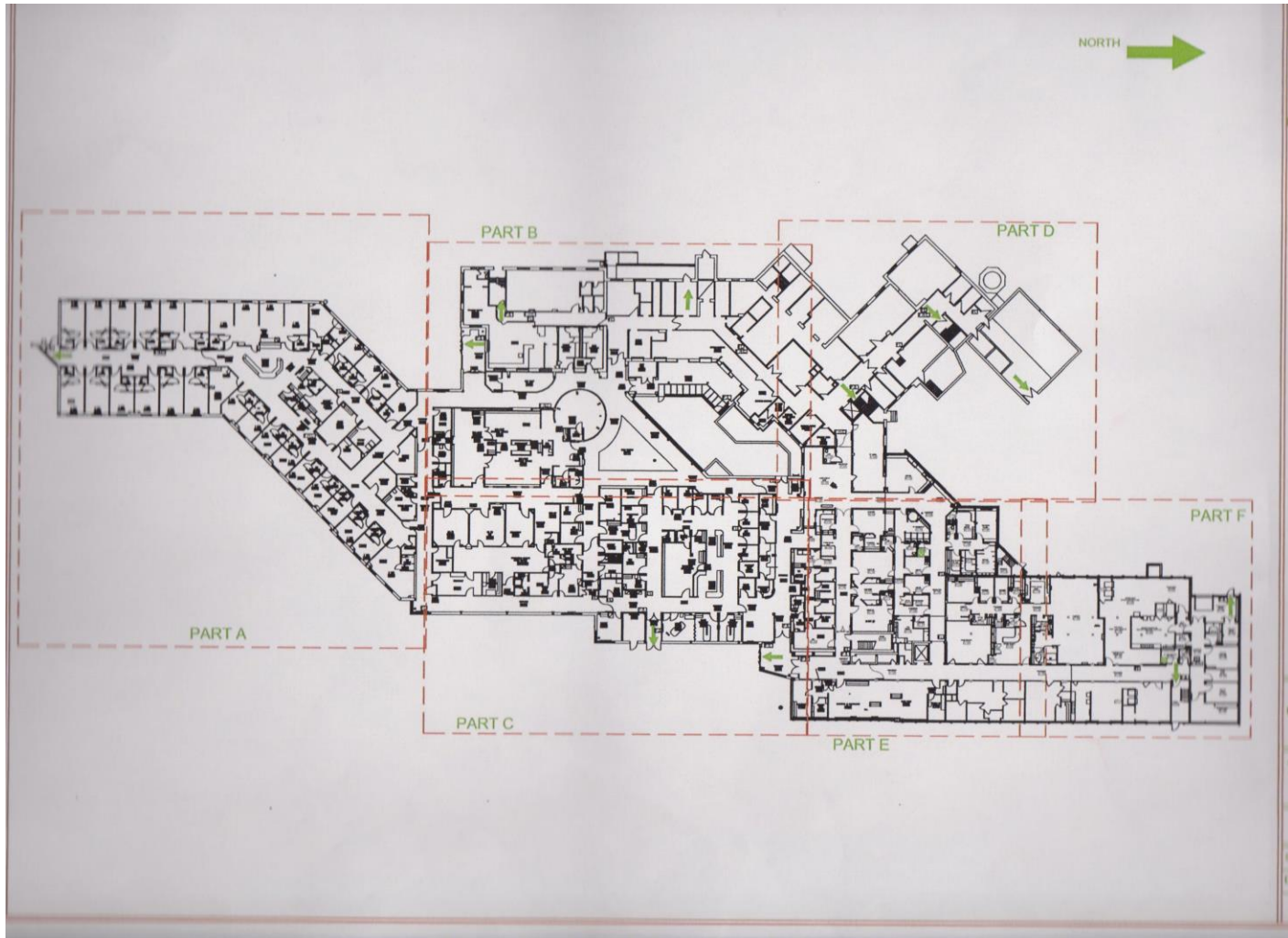
## Mental Health

# Major Health Issues

## Top Reasons for Inpatient Admissions to TMH

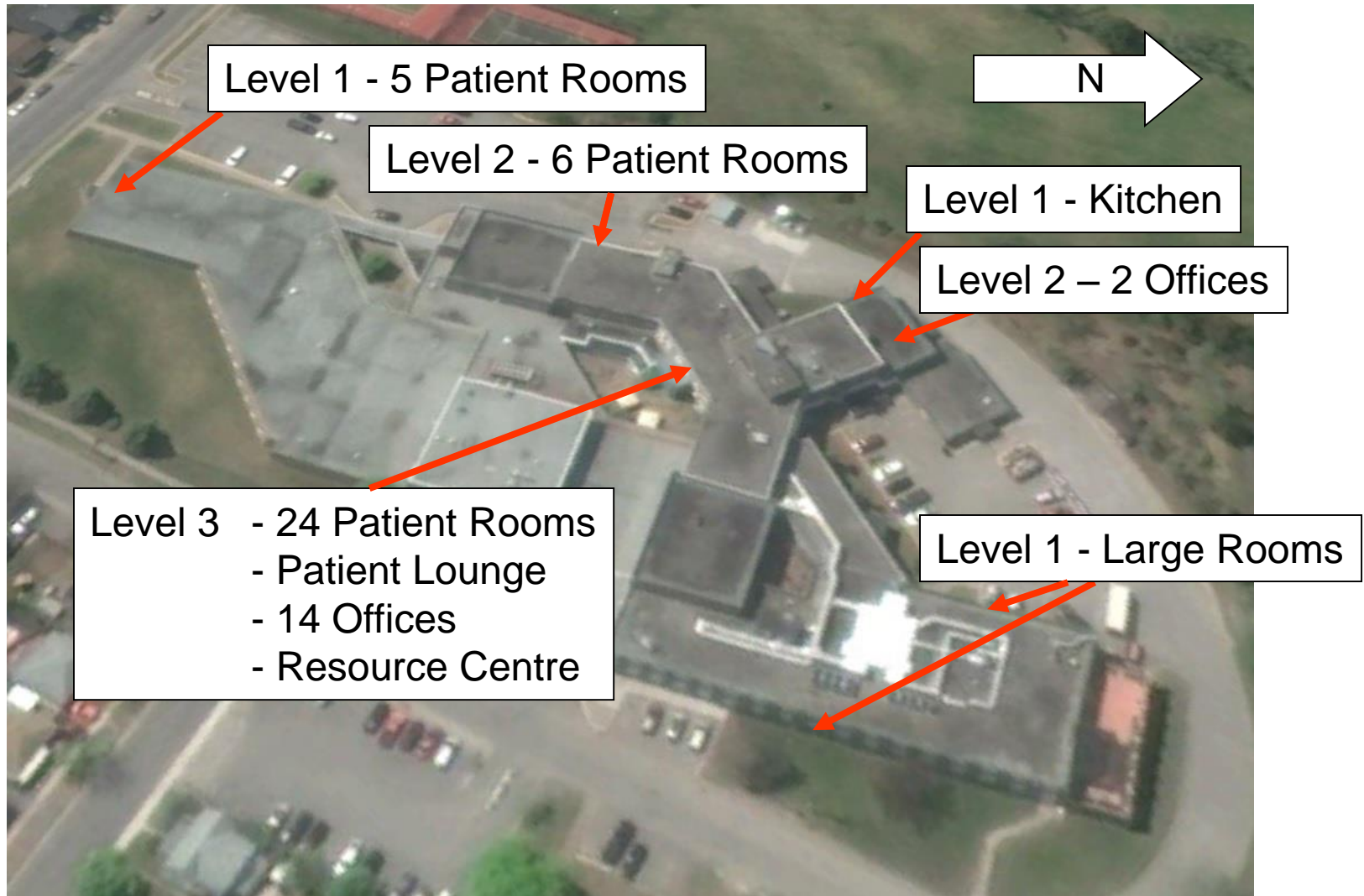
1. Chronic Obstructive Pulmonary Disease COPD
2. Palliative Care
3. Pneumonia
4. Heart Failure
5. Convalescence

# Overview of QHC-TMH Site Plan

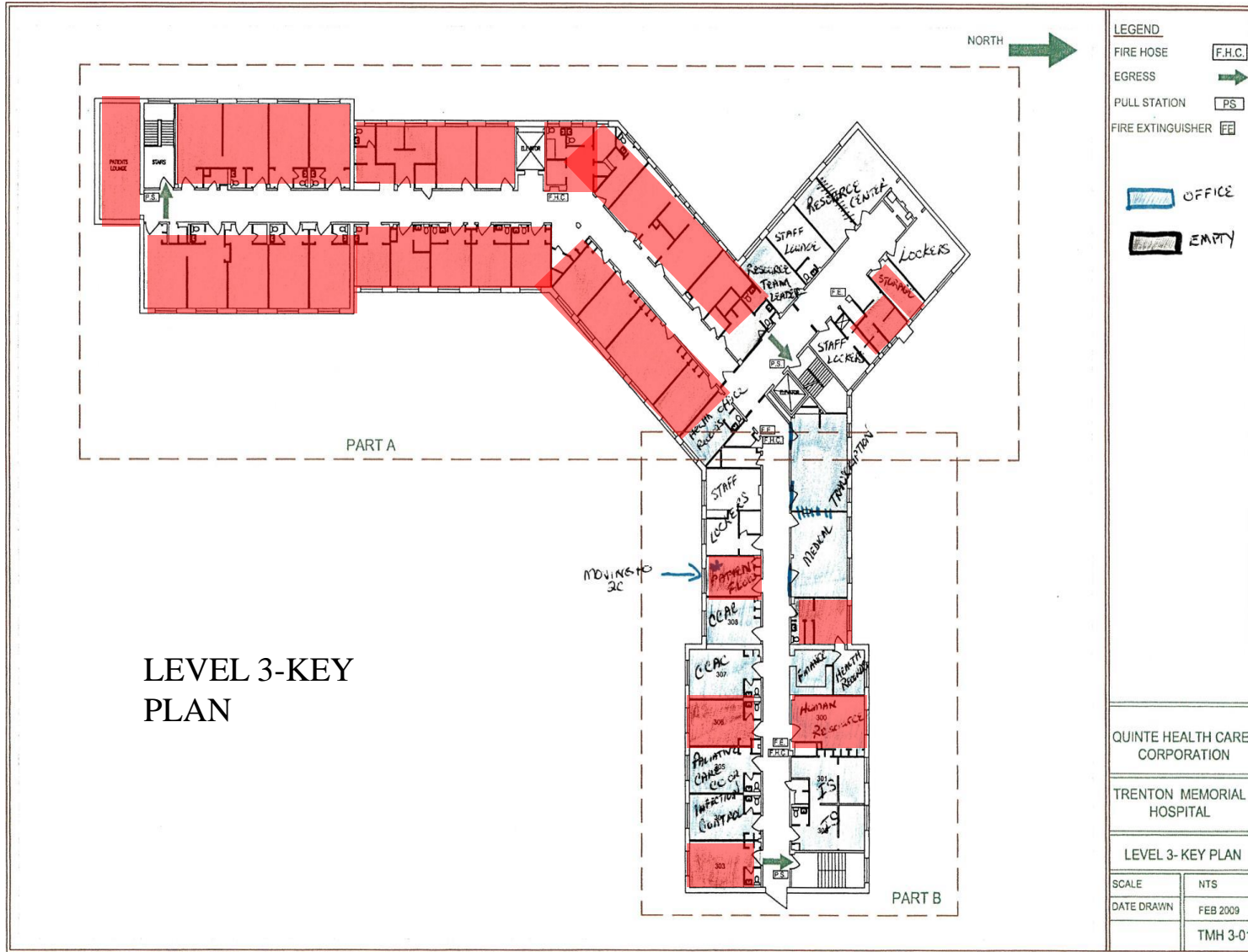




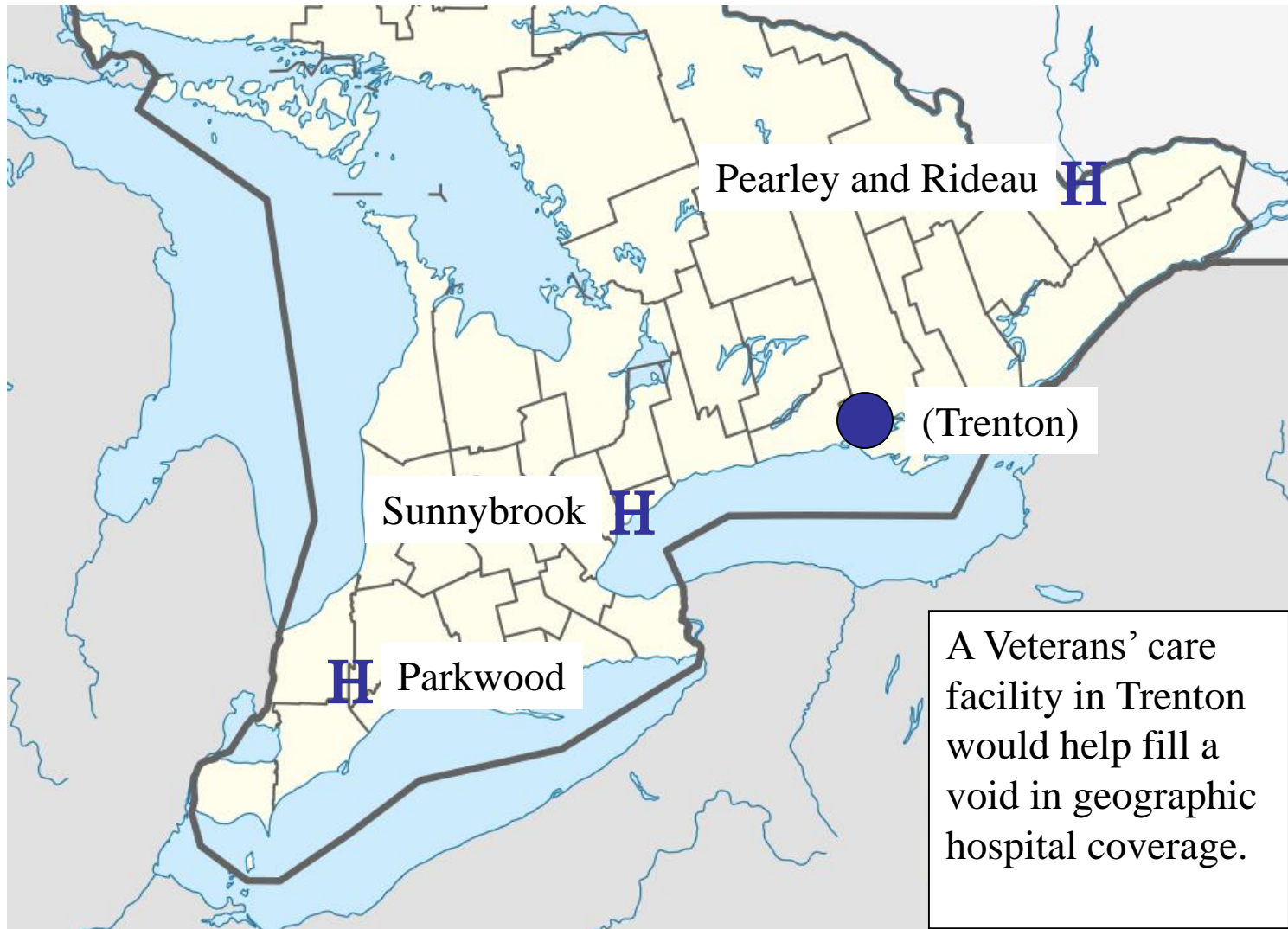
# Unused / Underused Space



# Third Floor



# Veterans Care at TMH



# HOW TO SUPPORT A VETERANS' WING

---

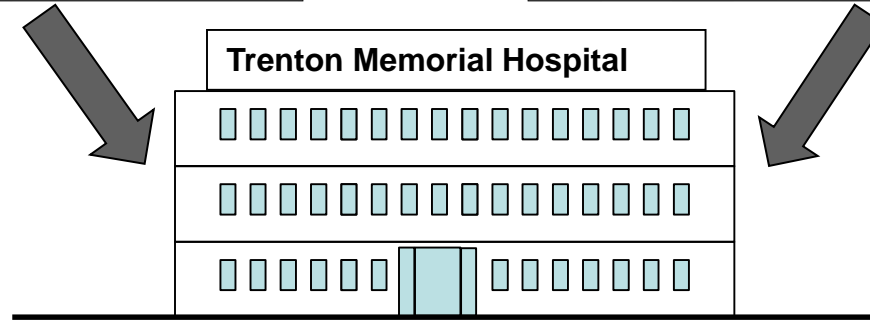
**VETERANS = SENIORS**

3000+ VETERANS IN THE AREA

7,000+ SENIORS IN THE AREA

VETERANS  
ADMINISTRATION

ONTARIO MINISTRY OF HEALTH  
AND LONG-TERM CARE



- PROVIDE CARE FOR ALL SENIORS WHO NEED SPECIAL HOSPITALIZATION
- SPACE AND SERVICES ARE AVAILABLE AT TMH
- THERE ARE NO CRITICAL OBSTACLES TO IMPLEMENTATION
- THERE IS POLITICAL SUPPORT AT LOCAL, PROVINCIAL AND FEDERAL LEVELS

# Services for Veterans / Seniors

**Desired State:**

Sustainable services based on community needs

**Driven by:**

- Ability to meet quality standards
- Population demographics/health status
- Available resources (funding and people)

**BRIGHTON  
QUINTE WEST  
HEALTH CARE  
SYMPOSIUM  
13 MAY 2015**

## LHIN-WIDE OR PROVINCIAL PROGRAM

Cardiac Surgery/Procedures Radiation Trauma and some ICU care Cancer Centre	Neurosurgery Transplants Genetic testing Specialized paediatric and obstetrical care
--	---

## REGIONAL SPECIALTY PROGRAM

Cardiac rehab Screening programs Chemotherapy MRI/CT ICU Other mental health services	Telemedicine Stroke Care Obstetrics (birthing) Trauma Language and speech pathology Public health Allergy specialist	Supportive housing (mental health, disabilities acquired brain injury) E-health and E-consults Joint replacement Paediatrics Ophthalmology
--	--	--

## LOCAL / PRIMARY CARE

Social programs Primary health provider Home care Assisted living Mental health counseling	Dialysis OT/Physio Imaging/X-Ray/Lab Substance Abuse Wound Care	ER services Long-term care homes End-of-life/palliative care Accessible housing Methadone clinic	Urgent care Pre-natal care Transportation for access to regional services
--	---	--	---

## SELF – WELLNESS AND CARE

Exercise programs Nutrition programs for diabetes Meals on Wheels	Health promotion and disease prevention Disease management Vaccination	Social programs Electronic home care support Senior's day program
---	--	---

# Positioning our Health Care

**TOPPED BY SPECIALIZED CARE**

REGIONAL  
CENTRE  
(KGH)

LHIN-WIDE OR PROVINCIAL PROGRAM

**WITH REGIONAL SPECIALTIES**

REGIONAL  
HOSPITAL  
(BGH)

REGIONAL SPECIALTY PROGRAM

**BASED ON A COMMUNITY SUPPORT SYSTEM**

COMMUNITY

LOCAL / PRIMARY CARE

SELF – WELLNESS AND CARE

SO WHERE IS TMH?

TMH

# Positioning our Health Care

TMH IS THE CENTRE  
OF OUR COMMUNITY

THE FOCUS FOR OUR  
HEALTH CARE

TMH

OR PROVINCIAL PROGRAM

PROGRAM

COMMUNITY

# Conclusions

This information is for use at all levels

There is broad support by citizens

Obstacles are funding issues, demographics

**We must respond to the needs  
of our community**



HOW TO PLACE  
TRENTON MEMORIAL HOSPITAL  
AT THE CENTRE OF HEALTH CARE  
IN OUR COMMUNITY

# Health Care in Quinte West

